

Instructions for using the PM test:

- 1) Remove the milk sample into a tube (part of the PM test).
- 2) Apply the milk sample on the surface of the selective chromogenic agar.
- 3) Incubation PM test is 22 to 24 hours at a temperature of 37.5°C.
- 4) Qualitative and quantitative determination of species of origin mastitis.

Package:

Tube, sterile loop, disinfectant napkin, three sector Petri dish Ø 90 mm, containing 3 different chromogenic soils: The sector „Stap“ for the detection of staphylococci. The sector „Strep“ for the detection of streptococci. Sector „G-“For the detection of gram-negative bacteria (G-sector is possible the detection of yeasts and molds).

PM test enables:

- Determining the species of origin of mastitis.
- Minimizing the consumption of antibiotics.
- Targeted use of antibiotics with indicator restrictions.
- Work efficiency and realizing cost savings on programme against mastoiditis and differentiated drying off cows.



Advantages of the PM test:

- Commercially available, rapid and inexpensive.
- Diagnosis of species of origin of mastitis on the farm
- A simple reading of results based on different colors grown colonies.
- Rapid screening of cows producing milk or contagious environmental pathogens within programmes against mastoiditis.

Vertrieb:

LMT Biosystems GmbH & Co KG
2340 Mödling, Schulweg 4/5
T: +43 2236 866050 , E:
office@lmtlab.pro

LMT LABORBEDARF
MIKROBIOLOGIE
TECHNOLOGIE



PM test

Pure Milk test

Culture set to determine the type of originator of mastitis

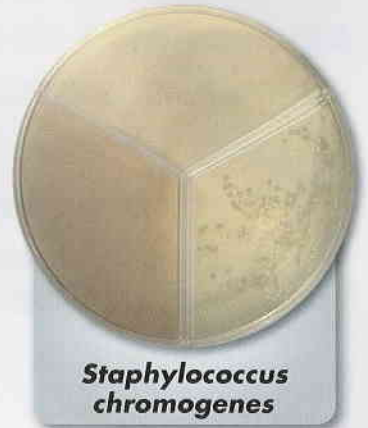
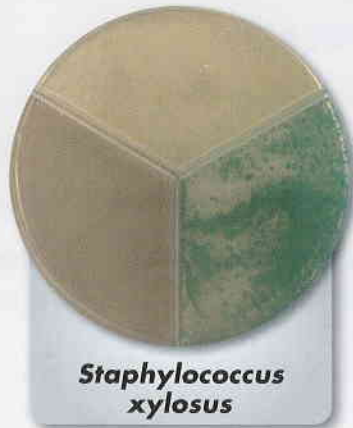
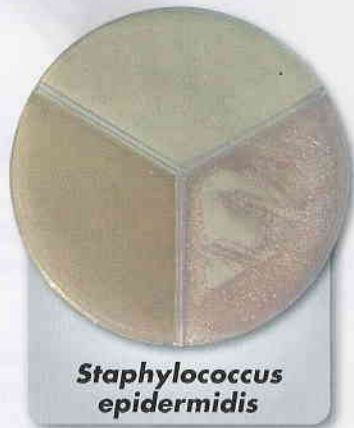
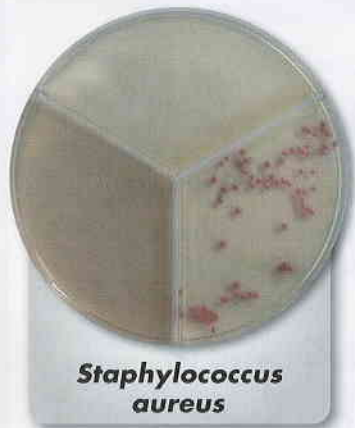
Diagnosis directly on the farm



Examples of bacterial colonies on the G- selective areas



Examples of bacterial colonies on STAP sector



Examples of bacterial colonies on STREP sector



Colors of individual bacteria may differ in a shade.
Every farm has individual species spectrum.

We recommend that in the framework of expertise:

- Determine the spectrum of pathogens of the mammary gland on the farm.
- Build strategy of the programme against mastoiditis.
- Ensuring control of the identified pathogens on MALDI-TOF.